

# **RS5A Wireless Lora module Specification**

# Update Record

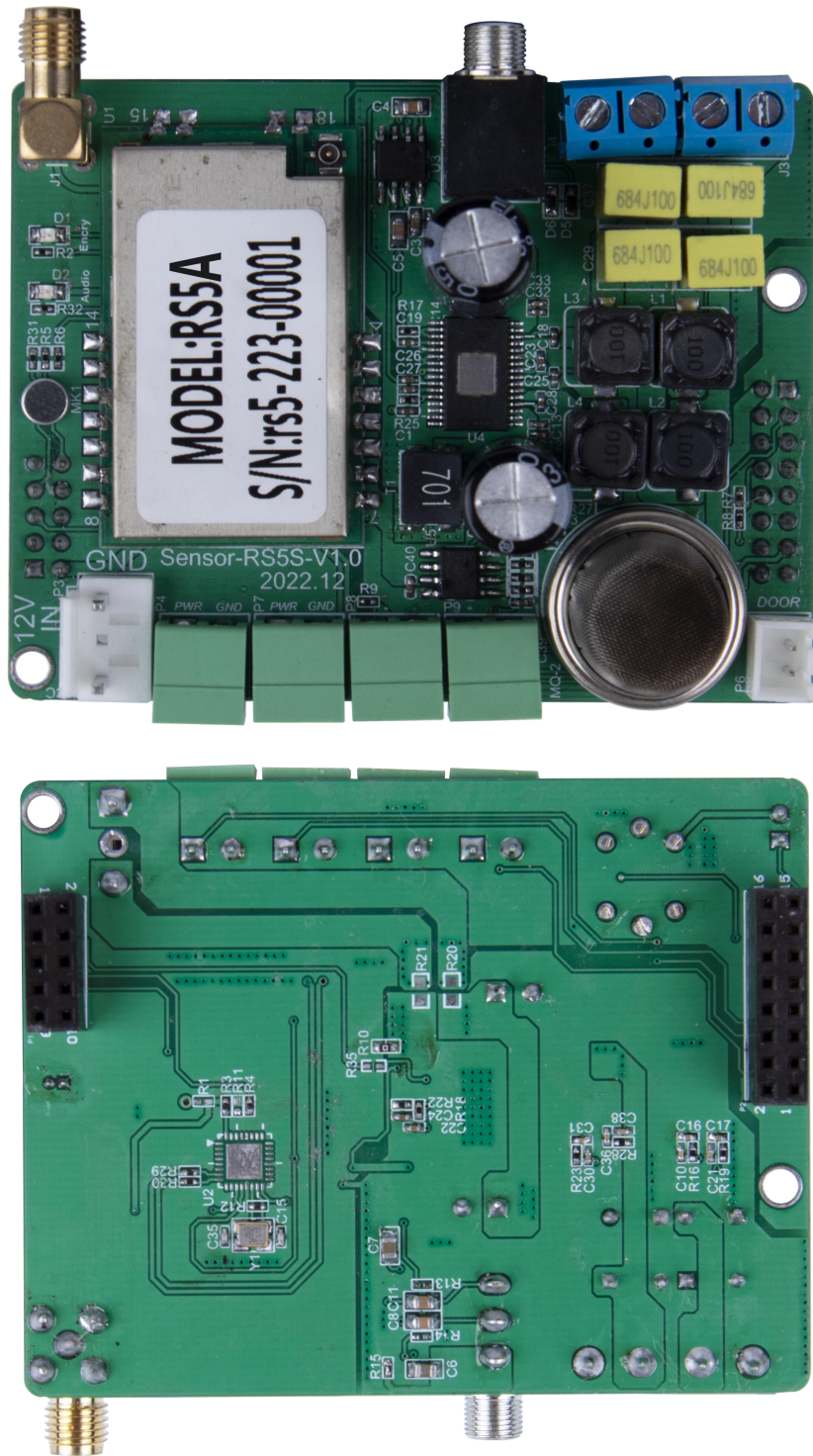
---

No.	Version	Updates	Revision Date
1	Ver.1.0	Initial Release	2021.09.29
2	Ver.1.1	Updating content	2023.03.27
3	Ver.1.2	Updating content	2024.05.27
4	Ver.1.3	Updating content	2024.06.15

The document is subject to change without prior notice

# Product Picture

---



Lora wireless synchronization module multi-function card RS5A

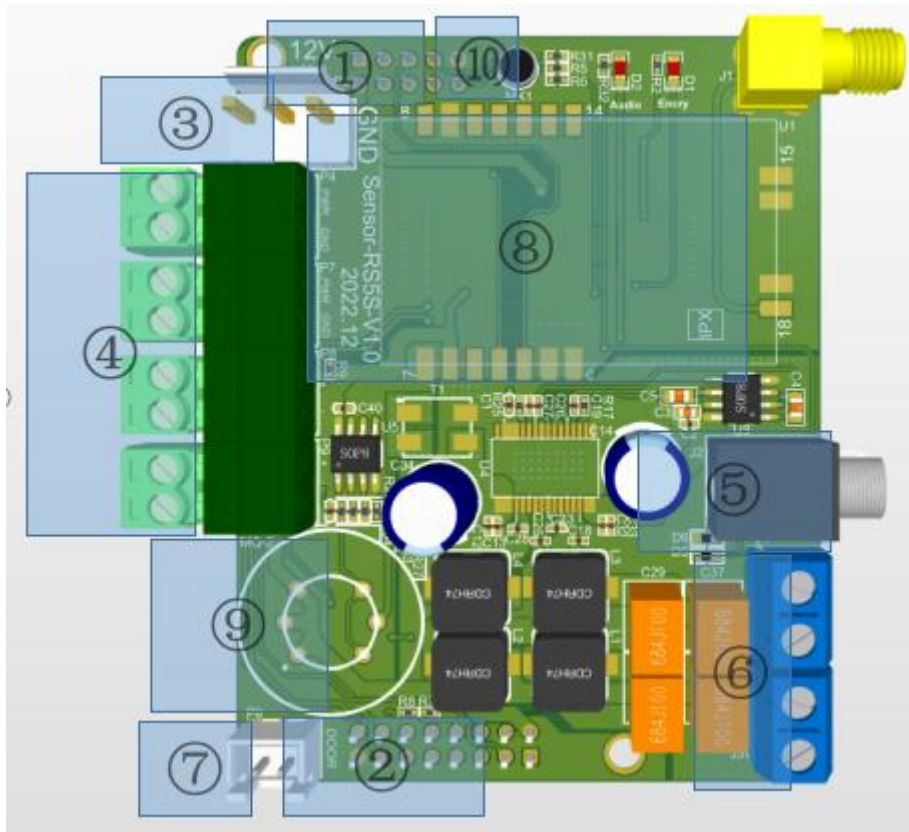
# Functional Features

---

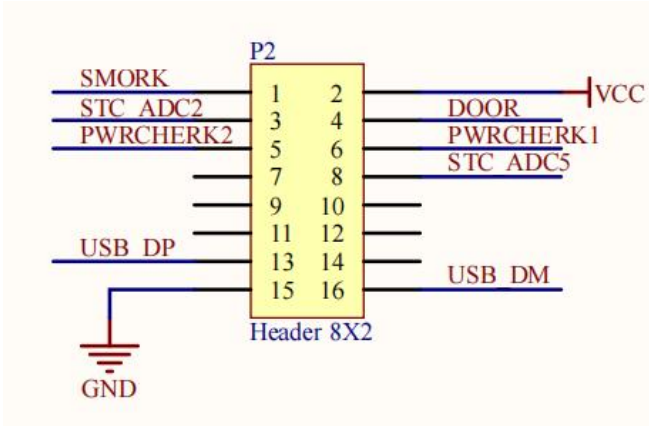
**Lora Wireless Synchronization Module Multi-function Card RS5A with the following features:**

1. Running indicator light is used to indicate whether the sensor is in normal working condition;
2. Wireless calibration of screen-to-screen time, so that the playback screen switching is completely synchronized with an error of 10ms or less (subject to the actual environmental impact of the reference value may deviate, the delay is not visible to the naked eye);
3. Use with Y50 control card to realize IP broadcast and audio playback;
4. Maximum support for 4 ways power supply voltage detection;
5. Standard with smoke, open and close the door and other detection interfaces.

# Interface Definitions



Interface Description	
Serial number	Type
①	<p>10PIN interface: connect Lora module, microphone</p>

②	<p>16PIN interface: connect to smoke, ADC detection, door open and close, USB</p>  <p>The diagram shows a 16-pin header labeled P2, which is an 8x2 header. The connections are as follows:</p> <ul style="list-style-type: none"> <li>Pin 1: SMORK</li> <li>Pin 2: DOOR (connected to VCC)</li> <li>Pin 3: STC ADC2</li> <li>Pin 4: PWRCHERK1</li> <li>Pin 5: PWRCHERK2</li> <li>Pin 6: STC ADC5</li> <li>Pin 7: (unconnected)</li> <li>Pin 8: (unconnected)</li> <li>Pin 9: (unconnected)</li> <li>Pin 10: (unconnected)</li> <li>Pin 11: (unconnected)</li> <li>Pin 12: (unconnected)</li> <li>Pin 13: USB DP</li> <li>Pin 14: (unconnected)</li> <li>Pin 15: GND</li> <li>Pin 16: USB DM</li> </ul>
③	Power interface: 12V power supply
④	4 ways power voltage detection
⑤	3.5mm audio input port
⑥	Amplifier audio output port
⑦	Door opening and closing detection interface
⑧	Lora module
⑨	Smoke module
⑩	Microphone

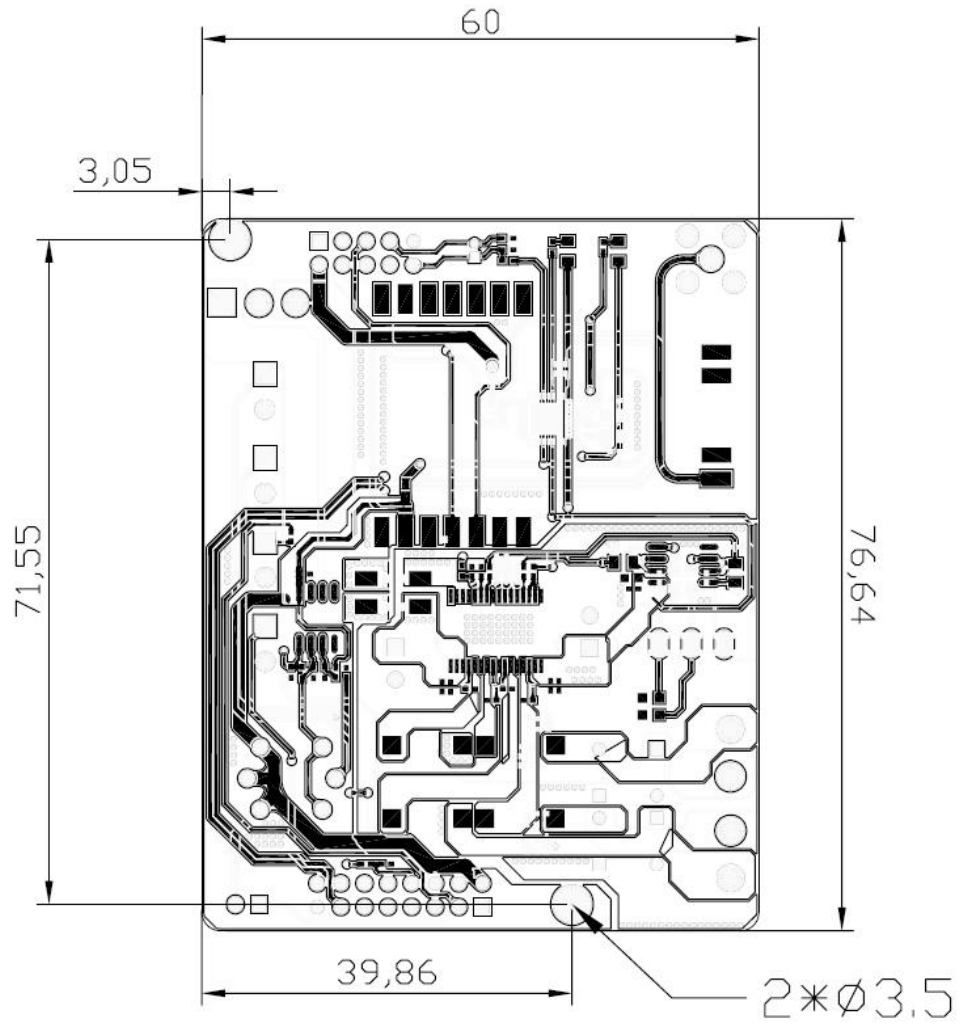
# Product Parameters

---

<b>Product name and model</b>	<b>Parameters</b>
<b>Multi-function card RS5A</b>	<ol style="list-style-type: none"><li data-bbox="472 573 1378 696">1. Synchronization radiation radius 2KM (the distance may deviate depending on the actual use environment);</li><li data-bbox="472 741 1378 864">2. Reserve interfaces for smoke, open/close door detection and power supply voltage detection;</li><li data-bbox="472 909 1378 943">3. Used with the Y50, no additional holes are required for fixing.</li></ol>

# Dimension

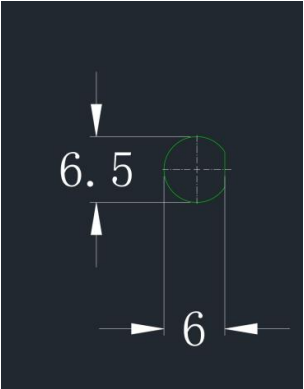
---



Unit: mm



Lora Synchronized Antenna must be secured to the outside of the case by adding an antenna extension cable when using a glue stick antenna. The extension antenna fixing hole opening dimensions are shown below:



# Notes

---

1. Pay attention to waterproofing.
2. It is strictly prohibited to plug and unplug the connection cable with electricity.
3. It is strictly prohibited to touch the AC220V terminal of the relay.
4. Don't try to touch the chips and their pins on the product to prevent electrostatic damage.